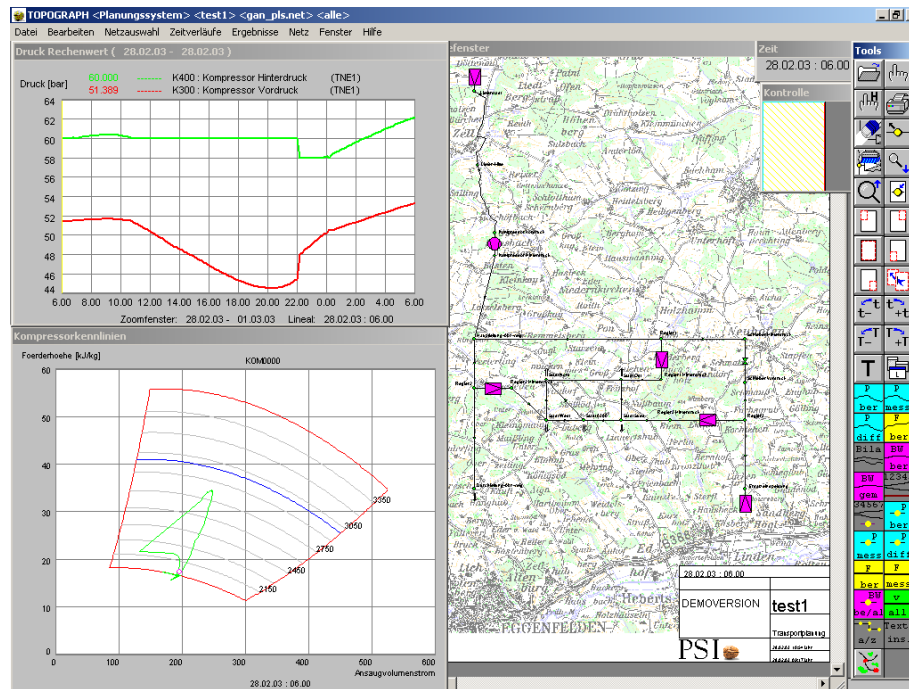


PSIGanesi - the Planning System



The PSIGanesi planning system performs **steady-state** and **transient** gas grid simulations for planning purposes.

PSIGanesi enables

- the analysis of the effects of new supply, delivery, transport, and storage contracts on the existing gas grid,
- the dimensioning and establishing of new segments and stations in the existing gas grid,
- the calculation of pressure and flow characteristics in an existing or a future gas grid,
- the provision for time and location gas composition variables,
- the planning and verification of work schedules on the grid and

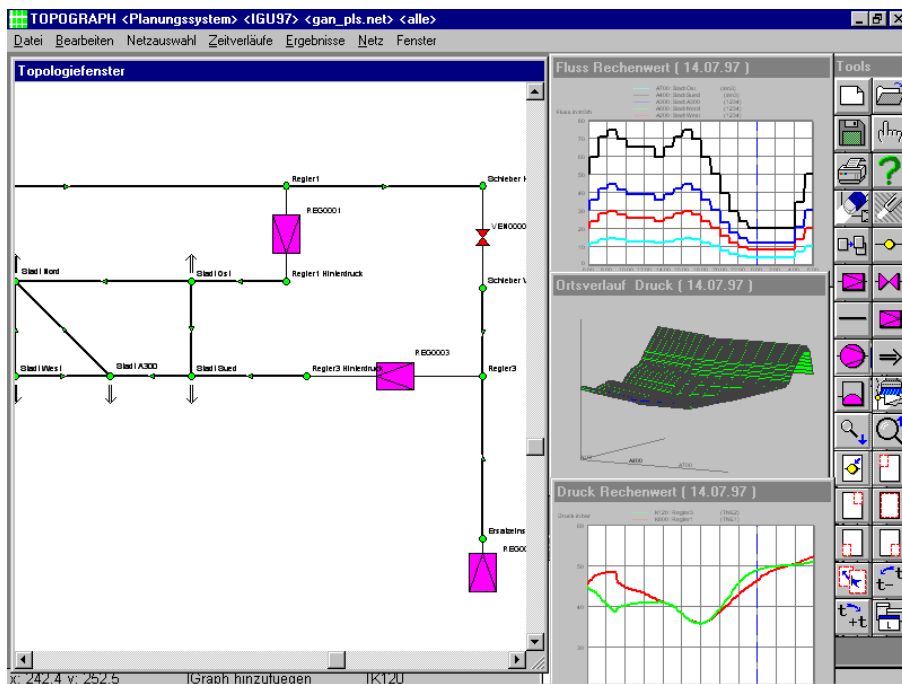
- the determination of capacity utilisation levels under various supply conditions.

The planning system is a parameterised module of the PSIGanesi simulation and reconstruction system. Therefore the exchange of gas grid models and data between online applications and planning applications is possible.

Functionality

The completely revised PSIGanesi planning system offers:

- An integrated user friendly and fully graphical user interface for topology input and modifications, data input and summary of results.



- Simple modification of the grid topology directly on the monitor by using the mouse.
- Error minimisation by means of elaborate control functions during input of grid elements and functions.
- Quantity specifications with automatic balancing of supply and procurement at the grid & sub grid levels.
- The provision of saved grid volumes during balancing.

A graphical result summary is obtained by data entry in the grid topology display. The following ways of depicting results are available:

- Single values representation in the topology.
- Graphical and tabular timelines.
- 3 dimensional graphs (pressure vs. time vs. location).
- Graphical analysis for maximum gas velocity in pipe sections and minimum pressure at nodes.

- Compressor modelling with or without operating envelope boundaries

The PSIGanesi planning system runs on all hardware platforms under the operating systems UNIX and Windows.

**PSI Aktiengesellschaft für
Produkte und Systeme der
Informationstechnologie**

Dircksenstraße 42-44

10 178 Berlin

Germany

Tel: +49 30 2801 - 0

Fax +49 30 2801 - 1000

Contact

PSI Energy Oil & Gas

Dr. Martin Bürgel

Tel: +49 30 2801 - 1504

Fax +49 30 2801 - 1011

E-mail mbuergel@psi.de

http://www.psiolandgas.com

