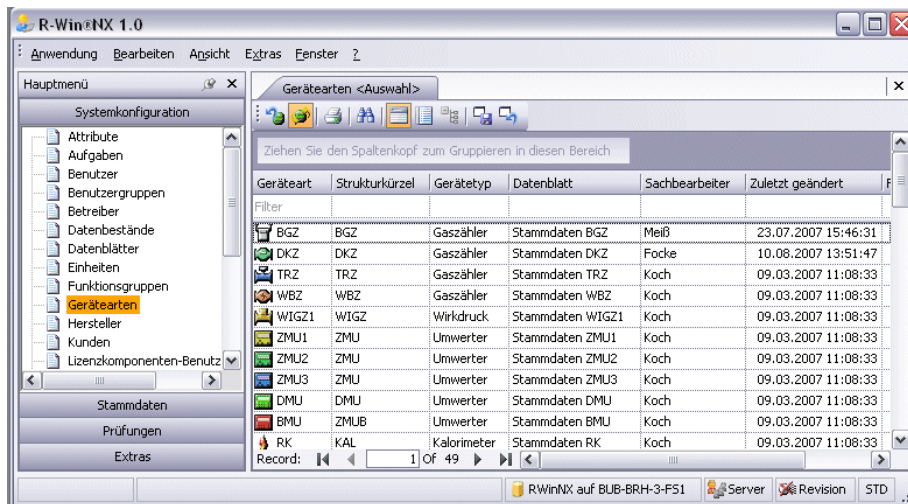


R-WIN NX: Revision and Calibration of Gas Measuring Devices



Your Task

The aim of device revision is to regularly check the accuracy of all billing related gas measuring instruments. This is done to minimise the measurement bias and the associated commercial risks.

In order to obtain reproducible inspection results, both partners must agree upon a set of standardised procedures.

Our Solution

In order to meet these complex requirements, many centralised and decentralised (notebook) functions are available in an integrated system environment: R-Win[®] NX, the revision system. For easier handling and a better integration into the corporate IT structures R-Win[®] NX uses the Windows operating system.

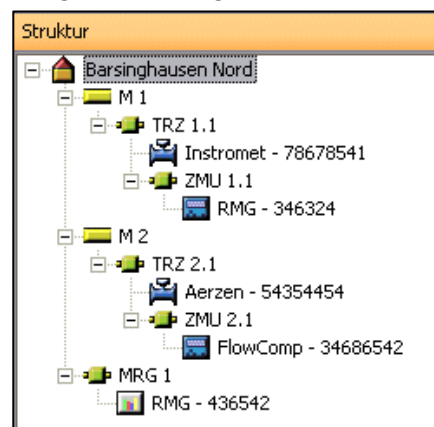
Master data which is related to stations and devices is managed in a structured way either centralised or decentralised, Data integrity is guaranteed by a secure data exchange between central and local data repositories.

The operator carries out tests and prepares the revision reports and calibration protocols on site using R-Win[®] NX's easy to use functions and user interface.

All necessary procedures for evaluating the tests are integrated in the system.

The revision history and trend displays are also important features of the application.

The R-Win[®] NX revision system is our standardised system for effectively fulfilling all tasks associated with the revision and calculation of gas measuring instruments.



System Functions

The availability of all necessary device- and installation data on-site together with R-Win® NX's efficient test methods and reports enable the user to make qualified statements at short notice.

Testing results, registration readouts und master data are collected on-site: They can be accessed by other users after "publication" to the system.

R-Win® NX is evolving more and more in the direction of becoming the central platform for billing relevant meter data. With sophisticated interfaces to the standard application for device administration and energy data management we support this development.

Übersicht		Prüfung hinzufügen	
Prüfmethode		Gerät / Anlagenposition	
<input type="checkbox"/>	Prüfmethode		
<input checked="" type="checkbox"/>	Prüfmethode: Prüfstellenrevision Mengenumwerter		
<input type="checkbox"/>	Prüfstellenrevision Mengenumwerter	FlowComp - 34686542	
<input type="checkbox"/>	Prüfstellenrevision Mengenumwerter	RMG - 346324	
<input checked="" type="checkbox"/>	Prüfmethode: Prüfung Mengenumwerter		
<input type="checkbox"/>	Prüfung Mengenumwerter	FlowComp - 34686542	
<input type="checkbox"/>	Prüfung Mengenumwerter	RMG - 346324	
<input checked="" type="checkbox"/>	Prüfmethode: Zählerstandserfassung		
<input type="checkbox"/>	Zählerstandserfassung	Barsinghausen Nord	

Your perspectives

An active R-Win® NX User-Group and close contacts to calibration authorities ensure that our revision system also meets your demands for functionality and quality.

Interfaces for the accounting system GasX and for SAP assist you with the maintenance of consistent data and support all processes of data acquisition and -adjustment.

System design

R-Win® NX is a decentralized application. Data and functions are available – according to the specific requirements – either in a centralised or decentralised way. A secure data exchange ensures the consistency of the data. Additional tools assist in configuration and operation of the system.



Our service

With our Software-Service-Contract (SSV) you ensure not only fast help in case of faults or other emergencies but also invest in further system enhancements.

We provide comprehensive turnkey systems. Individual user training and assistance with the system implementation are our standard services.

PSI Energy Markets GmbH

Kriegerstraße 1E

30161 Hannover

GERMANY

Phone: +49 5105 5212-60 and 59

Fax: +49 5105 5212-77

E-Mail: info-EM@psi.de

<http://www.psi-energymarkets.com>

<http://www.psi.de>

PSI 